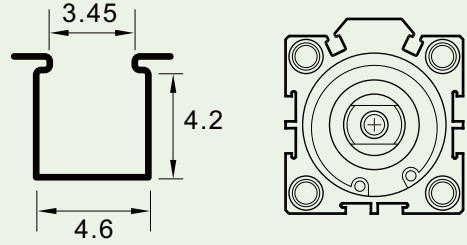


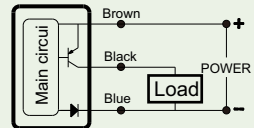
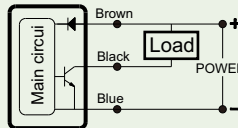
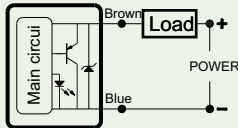
**Top install, more convenient, save cost**  
 Suitable for cylinders with square groove



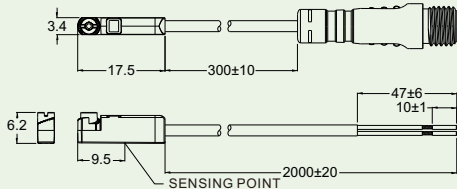
### SPECIFICATION

TYPE	AG - 14DF	AG - 14N	AG - 14P
CHARACTERISTIC			
SWITCHING LOGIC	Normally Open	Solid State Output, Normally Open	
SENSOR TYPE	2 Wire Solid State	NPN Current Sinking	PNP Current Sinking
OPERATING VOLTAGE	8~30V DC	5~30V DC	
SWITCHING CURRENT	1 ~ 50 mA	0 ~ 100 mA	
SWITCHING RATING	1.5 W Max.	3 W Max.	
CURRENT CONSUMPTION	NON	3 mA Max. @ 24V	3 mA Max. @ 24V
VOLTAGE DROP	2.85V Max. @ 50mA DC	0.8 V Max. @ 100 mA DC	
LEAKAGE CURRENT	90 μA Max. @ 28V	0.01 mA Max.	
INDICATOR	Red LED	Red LED	Green LED
CABLE	Φ2. 2, 2C, Grey Oil-Resistant PUR/PVC	Φ2. 2, 3C, Grey Oil-Resistant PUR/PVC	
SENSITIVITY	40 ~ 800 Gauss	40 ~ 800 Gauss	
SWITCHING FREQUENCY	900 Hz	900 Hz	
TEMPERATURE RANGE	-20~80°C	-20~80°C	
SHOCK	50 G	50 G	
VIBRATION	9 G	9 G	
ENCLOSURE CLASSIFICATION	IP 68 (GB/T 4208-2017)	IP 68 (GB/T 4208-2017)	
PROTECTION CIRCUIT	Surge Suppression	Power Reverse Polarity; Surge Suppression	
CE Certificate NO.	<b>E8A 053334 0014</b>	<b>E8A 053334 0014</b>	<b>E8A 053334 0014</b>
3C Certificate NO.	/	/	
CNEx Certificate NO.	<b>CNEx21.2238X</b>	<b>CNEx21.2239X</b>	

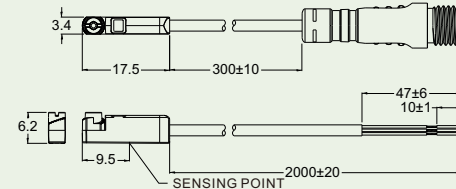
Connect Diagram



**AG-14DF**  
**AG-14DF-QC8/QJ8**  
**AG-14DF-QC12(QJ12)**  
**AG-14DF-EZ2M**



**AG-14N(P)**  
**AG-14N(P)-QC8/QJ8**  
**AG-14N(P)-QC12(QJ12)**  
**AG-14N(P)-EZ3M**



**QJ8, QJ12, EZ QUICK CONNECTOR (IEC61076-2-101/IEC61076-2-104)**

