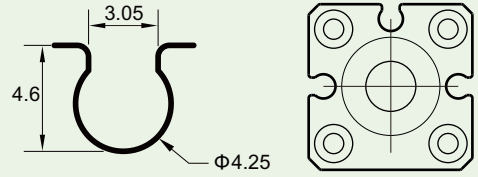


Top install, more convenient, save cost
 Suitable for cylinders with $\Phi 4$ C-slot groove



SPECIFICATION

TYPE	AG - 25DF	AG - 25N/S	AG - 25P
CHARACTERISTIC			
SWITCHING LOGIC	Normally Open	Solid State Output, Normally Open	
SENSOR TYPE	2 Wire Solid State	NPN Current Sinking	PNP Current Sinking
OPERATING VOLTAGE	8~30V DC	5~30V DC	
SWITCHING CURRENT	1 ~ 50 mA	0 ~ 100 mA	
SWITCHING RATING	1.5 W Max.	3 W Max.	
CURRENT CONSUMPTION	NON	3 mA Max. @ 24V	3 mA Max. @ 24V
VOLTAGE DROP	2.85V Max. @ 50mA DC	0.8 V Max. @ 100 mA DC	
LEAKAGE CURRENT	90 μ A Max. @ 28V	0.01 mA Max.	
INDICATOR	Red LED	Red LED	Green LED
CABLE	$\Phi 2.2$, 2C, Grey Oil-Resistant PUR/PVC	$\Phi 2.2$, 3C, Grey Oil-Resistant PUR/PVC	
SENSITIVITY	40 ~ 800 Gauss	40 ~ 800 Gauss	
SWITCHING FREQUENCY	900 Hz	900 Hz	
TEMPERATURE RANGE	-20~80°C	-20~80°C	
SHOCK	50 G	50 G	
VIBRATION	9 G	9 G	
ENCLOSURE CLASSIFICATION	IP 68 (GB/T 4208-2017)	IP 68 (GB/T 4208-2017)	
PROTECTION CIRCUIT	Surge Suppression	Power Reverse Polarity; Surge Suppression	
CE Certificate NO.	E8A 053334 0014	E8A 053334 0014	E8A 053334 0014
3C Certificate NO.	/	/	
CNEx Certificate NO.	CNEx21.2238X	CNEx21.2239X	

