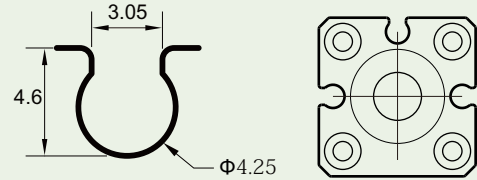


Suitable for cylinders with $\Phi 4$ C-slot groove

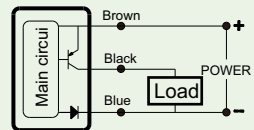
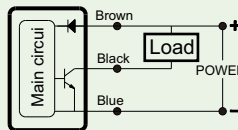
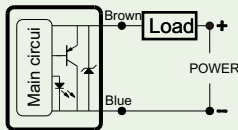


- stainless steel housing
- corrosion resistant
- Integrated injection molding
- cutting fluid resistant

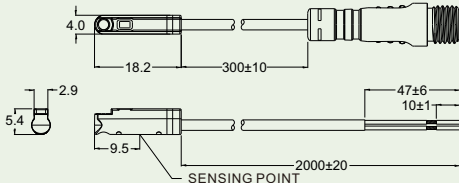
SPECIFICATION

| TYPE | AL - 26M | AL - 26MN | AL - 26MP |
|--------------------------|---|---|---------------------|
| CHARACTERISTIC | | | |
| SWITCHING LOGIC | Normally Open | Solid State Output, Normally Open | |
| SENSOR TYPE | 2 Wire Solid State | NPN Current Sinking | PNP Current Sinking |
| OPERATING VOLTAGE | 8~30V DC | 5~30V DC | |
| SWITCHING CURRENT | 1 ~ 50 mA | 0 ~ 100 mA | |
| SWITCHING RATING | 1.5 W Max. | 3 W Max. | |
| CURRENT CONSUMPTION | NON | 3 mA Max. @ 24V | 3 mA Max. @ 24V |
| VOLTAGE DROP | 2.85V Max. @ 50mA DC | 0.8 V Max. @ 100 mA DC | |
| LEAKAGE CURRENT | 90 μ A Max. @ 28V | 0.01 mA Max. | |
| INDICATOR | Red LED | Red LED | Green LED |
| CABLE | $\Phi 2.2$, 2C, Grey Oil-Resistant PUR/PVC | $\Phi 2.2$, 3C, Grey Oil-Resistant PUR/PVC | |
| SENSITIVITY | 40 ~ 800 Gauss | 40 ~ 800 Gauss | |
| SWITCHING FREQUENCY | 900 Hz | 900 Hz | |
| TEMPERATURE RANGE | -20~80°C | -20~80°C | |
| SHOCK | 50 G | 50 G | |
| VIBRATION | 9 G | 9 G | |
| ENCLOSURE CLASSIFICATION | IP 68 (GB/T 4208-2017) | IP 68 (GB/T 4208-2017) | |
| PROTECTION CIRCUIT | Surge Suppression | Power Reverse Polarity; Surge Suppression | |
| CE Certificate NO. | E8A 053334 0014 | E8A 053334 0014 | E8A 053334 0014 |
| 3C Certificate NO. | / | / | |
| CNEx Certificate NO. | CNEx21.2238X | CNEx21.2239X | |

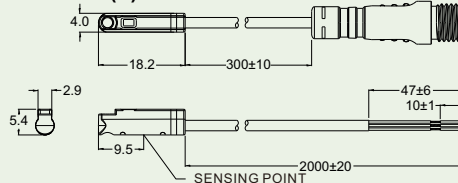
Connect Diagram



AL-26M
AL-26M-QC8(QD8 / QJ8)
AL-26M-QC12(QD12 / QJ12)
AL-26M-EZ2M



AL-26MN(P)
AL-26MN(P)-QC8(QD8 / QJ8)
AL-26MN(P)-QC12(QD12 / QJ12)
AL-26MN(P)-EZ3M



QJ8, QJ12, EZ QUICK CONNECTOR (IEC61076-2-101/IEC61076-2-104)

